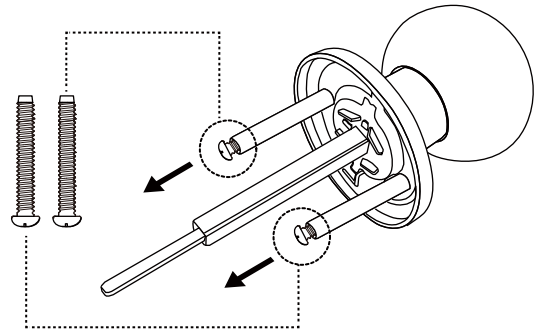


Installation Tips



Reminder

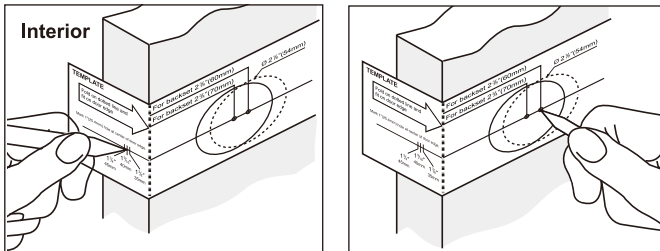
The machine screws are preinstalled in the handle, please remove them before installation.



If any accessories such as screws are missing from the package, or there are any other product issues, please contact our customer support team for assistance.

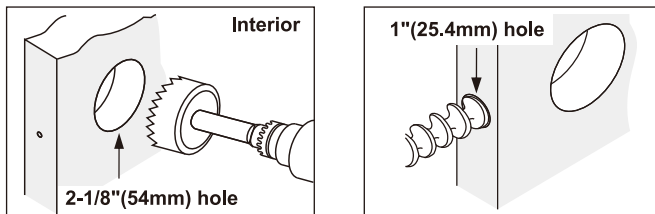
Step 1: Mark Door with Template

- Start 36"(914mm) from floor, fold and apply template to door, fold mark center of door edge.
- Select 2-3/8"(60mm) or 2-3/4"(70mm) backset as desired and mark center of hole on door face.

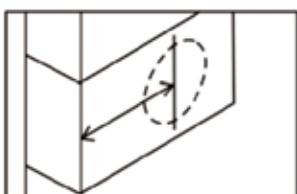


Step 2: Drill Holes

- Drill 2-1/8"(54mm) hole on door face from both sides as marked to avoid wood splitting.
- Drill 1"(25.4mm) hole in the centre of the door edge for the latch.

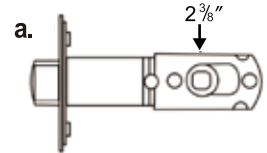


Step 3: Selecting the Proper Backset

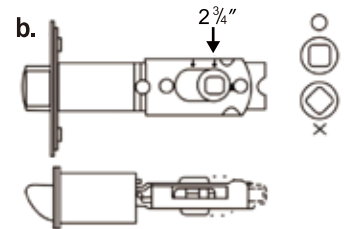


Backset is a distance from door edge to center of hole on door face.
Our locks are supplied with adjustable latch which can fit 2-3/8"(60mm) or 2-3/4"(70mm) backset.
Just follow the steps shown below to change backset.

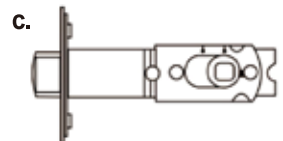
- This latch is set for 2-3/8"(60mm) backset.



- Keep spindle cam in correct position as illustrated. Pull spindle cam all the way to right.

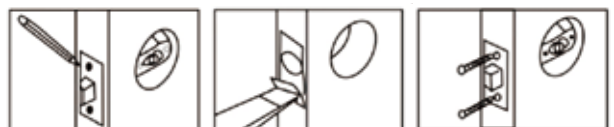


- Your latch is now set for 2-3/4"(70mm) backset. To reset 2-3/8"(60mm) backset, just push spindle cam back to left side.

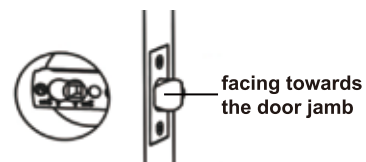


Step 4: Install Latch

- Insert latch in the hole, mark outline of latch faceplate and chisel 1/8"(3mm) deep until the latch faceplate flush to the door edge.
- Insert latch and drill 1/8"(3mm) pilot holes for the screws. Install screws and tighten.

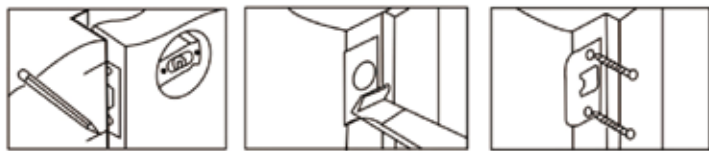


During installation, confirm the beveled face of the latch both is facing towards the door jamb.



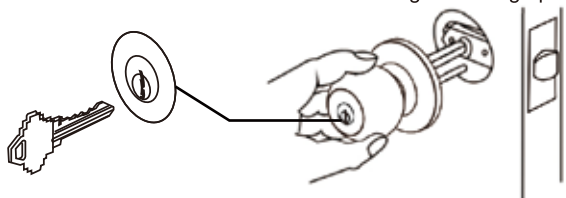
Step 5: Install Strike Plate

- Close the door until the latch assembly is just inside the door jamb. Mark 2 lines on the face of the door jamb indicating the top and bottom of the latch faceplate.
- Measure one half of door thickness from door stop and mark vertical center line. Match screw holes on strike plate with center lines on door jamb, mark outline and chisel $1/16"$ (1.6mm) deep for strike plate. Drill $1"$ (25.4mm) hole $1"$ (25mm) deep at intersection of horizontal and vertical line of strike plate. Then drill two $1/8"$ (3mm) pilot holes for the screws
- Install strike plate and tighten screws.



Step 6: Install Outside Knob

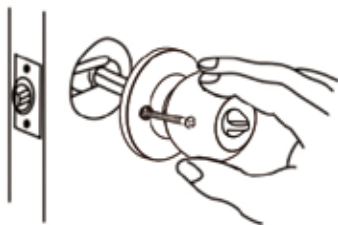
- Insert spindle through latch. Press flush against door.
Note: Keyhole should be positioned so that key-cuts are up, not down, as shown above. This insures smooth locking/unlocking operation.



- Turn outside knob to test operation
- Rotate the lock tailpiece from vertical to horizontal. You will hear a click

Step 7: Install Inside Knob

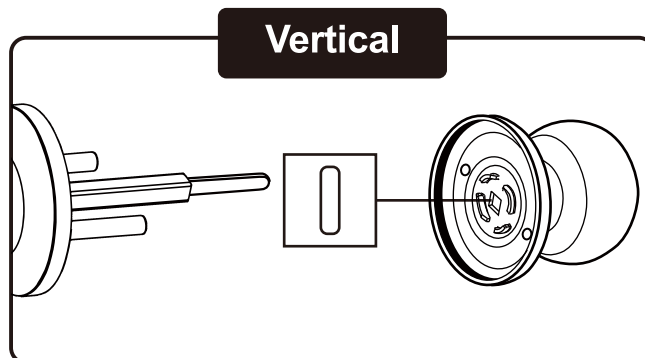
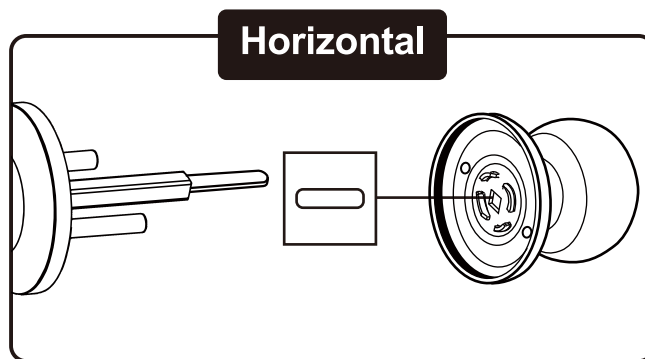
- Install inside knob and tighten screws until lock is firm.



Test Inside Knob

- Locked Turn the thumb-turn knob (vertical to horizontal), clicking sound.
- Unlock Turn the thumb-turn knob (horizontal to vertical), no sound.

Installation Tips



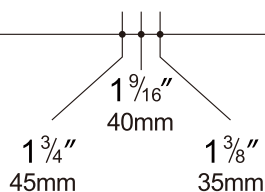
During installation, make sure that the lock tailpiece and the thumb-turn knob are in the same position, either vertical or horizontal. Insert the lock tailpiece into the slot behind the thumb-turn knob.

⚠ Always test for proper function of the door knob and latch before closing the door.

TEMPLATE

Fold on dotted line and fit on door edge

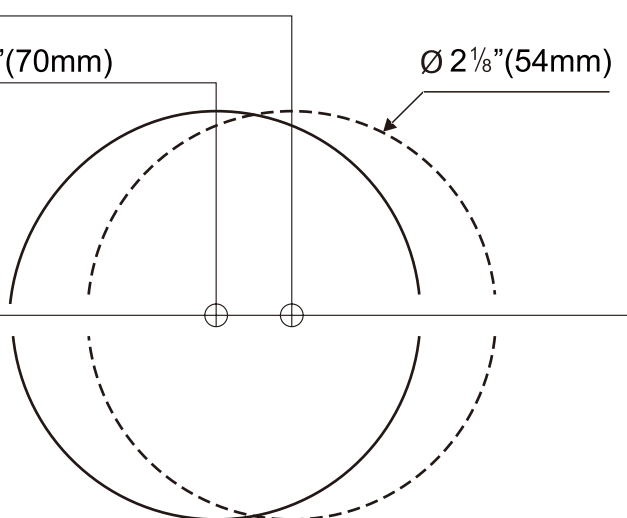
Mark $1"$ (25.4mm) hole at center of door edge.



For backset $2\frac{3}{8}"$ (60mm)

For backset $2\frac{3}{4}"$ (70mm)

$\text{Ø } 2\frac{1}{8}"$ (54mm)



Note: Please place template on a high edge of the door bevel.